

**WELCOME BACK!
WE MISSED YOU!**

**BLOCK A
DISCUSSIONS
FRANCES KELSEY
SECONDARY
SEPTEMBER 2020**



This Photo by Unknown author is licensed under [CC BY](#).

WELCOME BACK!



INTRODUCTIONS



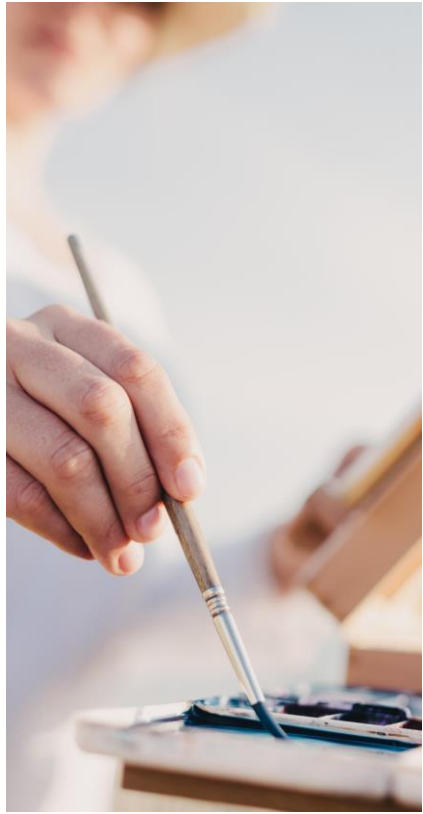
SAFETY



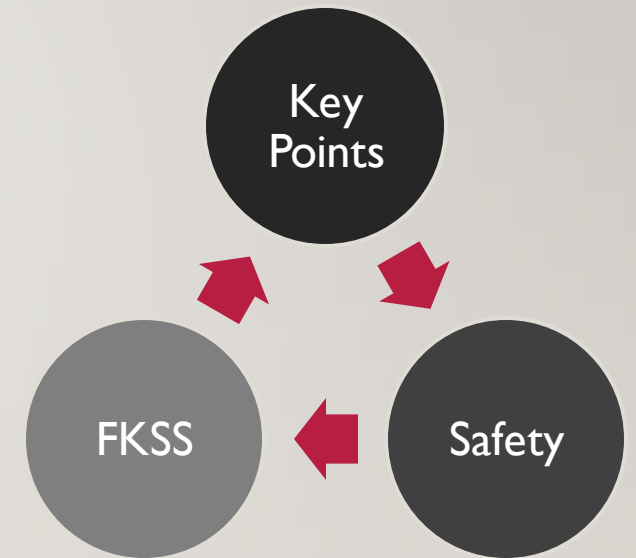
SHARING OUR
PLAN



TOGETHER...

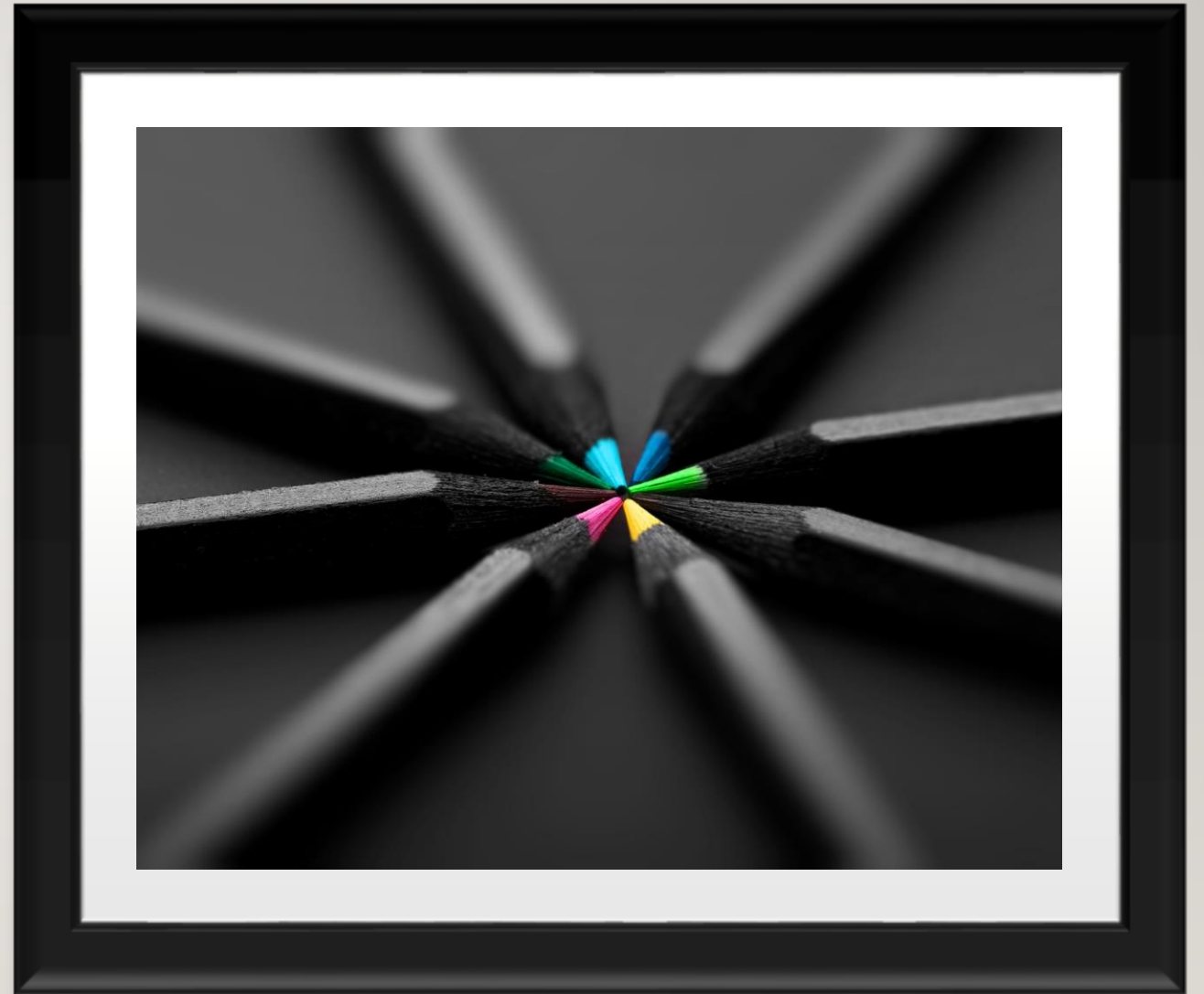


OUR FIRST DAY



YOU ARE PART OF THIS CLASS COHORT!

You can wear a mask in class if you wish to. You are not required to wear a mask if you are in our cohort/class. In the halls you must wear a mask because there are other students.



HAND SANITIZING



This Photo by Unknown author is licensed under [CC BY](#).

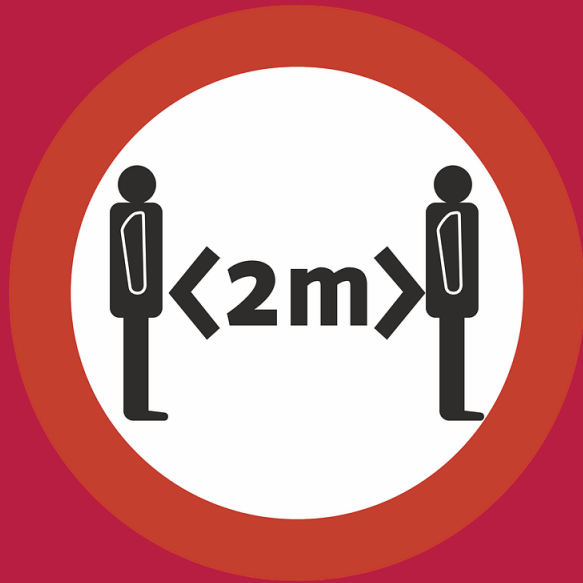
- **Hand sanitizing** - as you enter /exit: sanitize. All classrooms also have sanitizers. You can have your own as well for your personal use. Keep it in your back-pack.

PORTABLE HAND WASHING STATIONS



- **Portable hand washing stations** (12-15 in number) and additional hand sanitizing stations will be placed throughout the school. Soap works really well to kill viruses.

SIGNS



You do not go into the office, for example, but there is a marked point outside of the office.

Keep your 2m distance from people not in your class cohorts.

An aerial photograph of a roundabout with several lanes. A white truck is in the center, and several cars are driving around it. The road has white lane markings and a central island. The surrounding area is green grass.

ARROWS

- **Follow the flow of the arrows in the hall, even if there are not people many around. We need to be in the habit. People also come out of doorways and expect you to be where you should be. We will remind you if you forget!**

SELF CHECK



This Photo by Unknown author is licensed under [CC BY-SA](#).

- **Self-check.** Even if you have the slightest snuffle or sore throat you feel before school, you must stay home. Call in the absence and connect with your teachers online. Your teacher will make sure you get the work you need to finish. When you are free of symptoms (runny nose, cough, etc.) you can return. If you do start to feel ill at school, as usual, you are to let your teacher know and we will help. Family will need to bring you home.

A group of people are participating in a zorb ball activity on a grassy field. They are wearing large, clear, inflatable plastic spheres. The scene is outdoors with trees in the background and bright sunlight. A dark semi-transparent overlay covers the right side of the image, containing text.

ABSOLUTELY NO MEET AND GREETES!

- **GO DIRECTLY** to class
(No meeting or grouping in any hallway). Outside and safely distanced is fine.

NO LOCKERS

- Remember to pack ALL you need in your backpack. Bring your water bottle for the water station.

TWO REUSABLE MASKS

- You will be given 2 reusable masks. You can wear your own as well. Masks are required to be worn by staff and students in hallways at class change, when heading to a washroom, or when outside of School Cohorts.

LIMIT CONTACTS!

- Our timetable for now follows the Quarter system. Most students will be grouped with the same students over 10 weeks. Class Cohorts at the junior level are no more than 30, while a small group of senior cohorts may need to be more because of course availability. These Class Cohorts are each part of their own larger but discrete School Cohort. All School Cohorts will physically limit student groupings to no more **than 120 students.**

LUNCH!

- You are responsible to physically distance from others outside of your family “bubble” or cohort. You can eat on the field, the benches, around the school property. We recommend you do not go off site unless a family member is picking you up for lunch or you live close by.



This Photo by Unknown author is licensed under [CC BY-SA-NC](#).

LUNCH ON RAINY DAYS

- Please make sure you have a raincoat/ umbrella so you can still go outside. We are working on cohort locations for bad weather, which may include remaining in your classroom to eat but still getting some fresh air afterward.

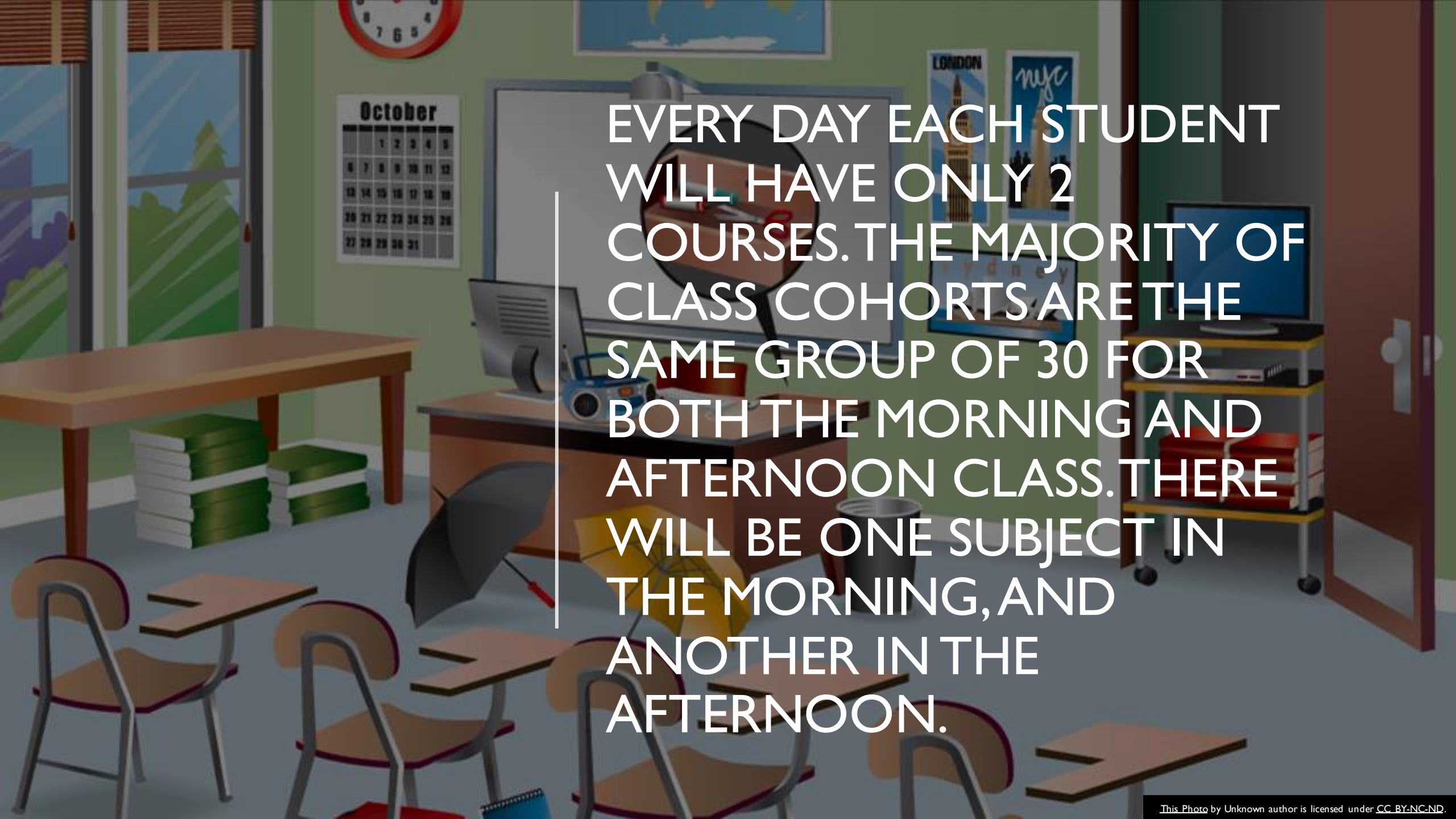
A close-up photograph of a wooden door with a window. The window is divided into six panes (two columns of three). The door has a metal handle and a lock mechanism. The lighting is dramatic, with strong highlights and deep shadows.

**YOUR MORNING, LUNCH, AND AFTER
SCHOOL ENTRANCE/EXIT IS....**

WE WILL OPERATE ON A QUARTER SYSTEM. THIS MEANS STUDENTS WILL CHANGE EVERY 10 WEEKS. THERE WILL BE 4 QUARTERS, 8 COURSES COMPLETED OVER THE YEAR.



- Sept- Nov 13
- Nov 15- January 29
- Feb 1- April 23
- April 26-June 24

A 3D-rendered classroom scene. In the foreground, several wooden desks with attached writing surfaces and metal-framed chairs are arranged. In the background, a teacher's desk is equipped with a computer monitor, a printer, and a blue portable CD player. A large whiteboard is mounted on the wall behind the teacher's desk. To the left, a window with blinds looks out onto a green landscape. A calendar for the month of October is pinned to the wall. To the right, a wooden door is slightly ajar, and a small table holds a television and other electronic equipment. Posters for 'LONDON' and 'nyc' are visible on the wall.

EVERY DAY EACH STUDENT
WILL HAVE ONLY 2
COURSES. THE MAJORITY OF
CLASS COHORTS ARE THE
SAME GROUP OF 30 FOR
BOTH THE MORNING AND
AFTERNOON CLASS. THERE
WILL BE ONE SUBJECT IN
THE MORNING, AND
ANOTHER IN THE
AFTERNOON.

CHANGES...

- Unfortunately, due to the need for limiting contacts, some classes cannot operate this year. **1st Quarter classes also cannot be adjusted as students must remain together.** We have to do this to follow the directions of the Public Health Officer.

Q BLOCK(CAREERS)

- There will be no "Q" block. Careers, Health, and Capstone will be in your schedule. Some senior courses may have to expand on the single class cohort of 30.



ALL GRADE 8 WILL
STAY TOGETHER ALL
YEAR WITH THEIR
CLASS COHORT.

AFTER 1ST QUARTER

- After 1st Quarter (10 weeks) Grade 9-12 courses will change. Students will move into a new grouping, or cohort, as this will be a new set of 2 subject/classes every quarter. The class cohort for 9-12s will then also change so students will be part of a "new" set of students. Grade 8s will stay with the same group.

Time	MON	TUES	WED	THUR	FRI
9:00 - 11:45	A	A	A	A	A
11:45 - 12:30	LUNCH				
12:30 - 3:15	B	B	B	B	B

THURSDAY SEPTEMBER 10 AND FRIDAY SEPTEMBER 11

- **THURSDAY, SEPTEMBER 10th
GRADE 8 & 9 Only**

- 9 - 3:15 pm Attendance this day is only for grade 8 and Grade 9 students
Meet and Greet, Safety Discussion, overview of course and any introductory activities. Administrators will visit all cohorts on Day 1 as part of our Welcome and Orientation Safety plan.

- **FRIDAY, SEPTEMBER 11th GRADE
10, 11, 12s Only**

- 9 - 3:15 pm Attendance this day is only for grade 10- 12 students
Meet and Greet, Safety Discussion, overview of course and any introductory activities. Administrators will visit all cohorts on Day 1 as part of our Welcome and Orientation Safety plan.



QUESTIONS